



# Simply Versatile

*A system designed for  
reproducibility and confidence  
in soft tissue repair*

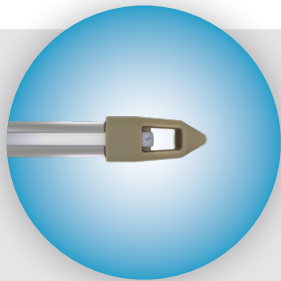
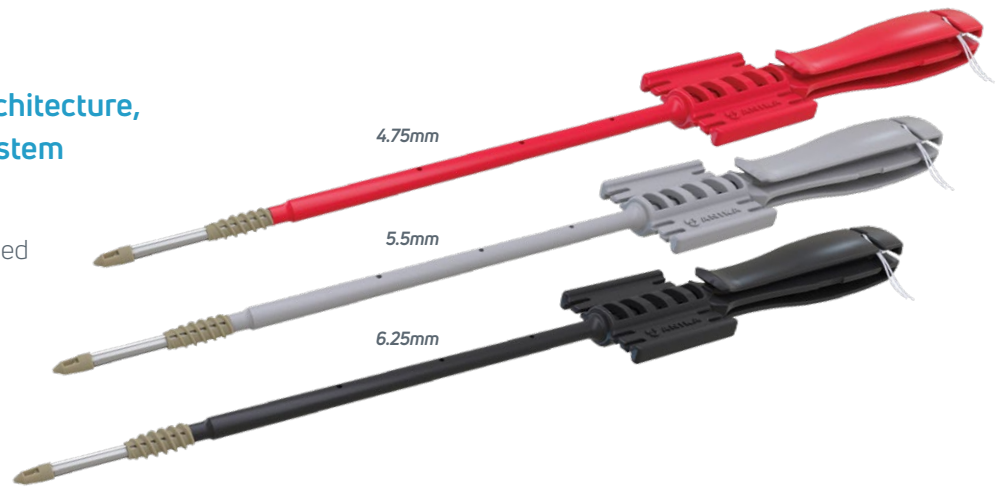
**X-Twist™**  
**Fixation System**  
*Rotator Cuff Repair*

# X-Twist Fixation System

The X-Twist™ is a knotless, open architecture, and fast inserting suture anchor system with multiple configurations.

Made of PEEK, the X-Twist system is designed for versatility across procedures:

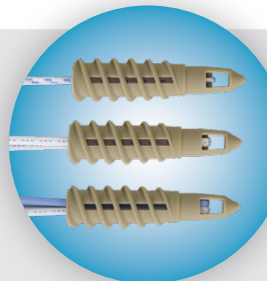
- Single or double row
- Medial and/or lateral row applications
- Knotless and fully knotted constructs



## Large Distal Eyelet

Accommodates four 2mm tapes plus three #2 sutures

*Maximize tendon to bone coverage, points of fixation, and load sharing to support a secure repair*



## Sliding Retention Sutures

Can be incorporated into repair or discarded

*Anchor can be used like a traditional double loaded anchor with multiple sliding 1.6mm suture tapes*



## Open Architecture Design

Five, 1.4mm vents run along four sides of the anchor body

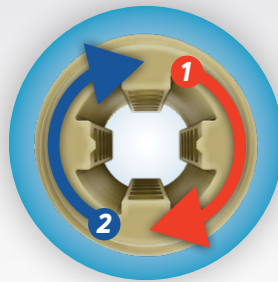
*Enhance marrow element flow to the repair site to support healing and bony ingrowth*



## Unique X-Spline™ Drive

X-Spline™ drive provides 2 times the torsional efficiency of a traditional hex drive

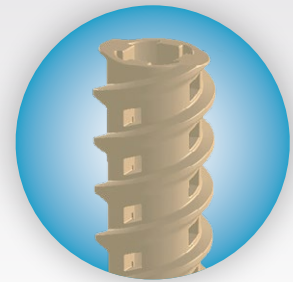
*Reliable insertion even in hard bone*



## Double Helix Design

2 independent threads in double helix relationship with high threaded pitch

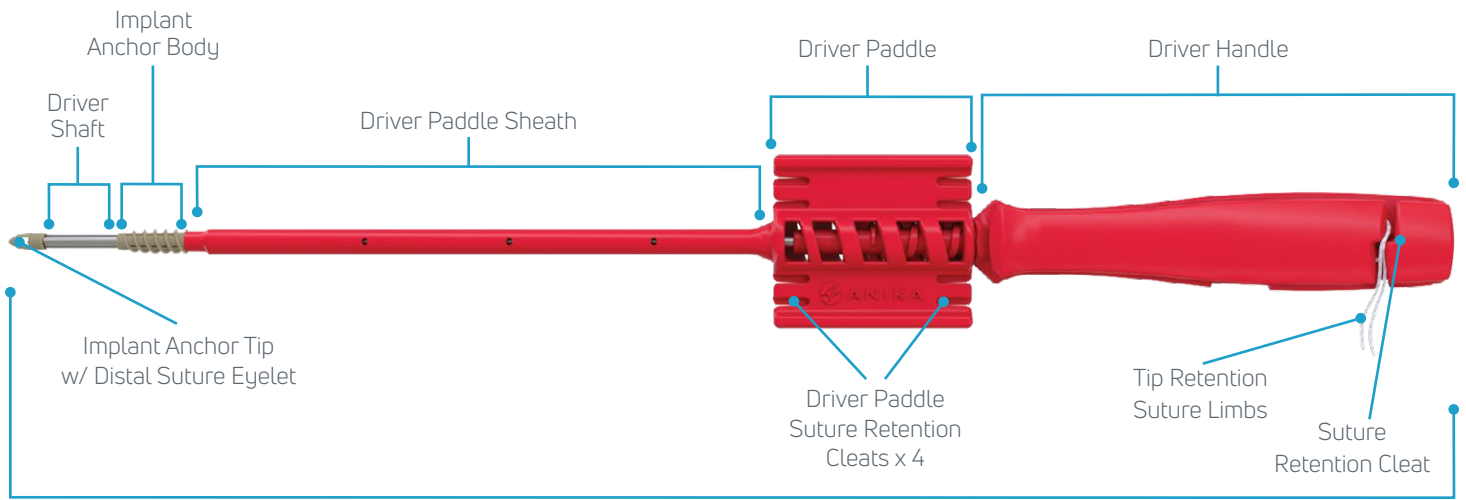
*Faster insertion*



## Fully Threaded

Consistent bone to anchor purchase points across the anchor body

*Provides purchase into cortical and cancellous bone resulting in a stable repair that resists micromotion and pullout*



Anchor/Driver Assembly

### Multiple Repair Constructs



Double row knotless with two sets of 2mm suture tapes



Medially knotted with four sets of 1.6mm suture tape and a knotless lateral row

### Mean Pullout Strength (lbs)\*



\*Data on file

# X-Twist Knotless Fixation System

X-Twist™ Knotless Suture Anchors				
Part #	Diameter (mm)	Length (mm)	Description	Material
XT24700	4.75	23	X-Twist PEEK 4.75mm, w/1, #2 suture (blu/wht)	PEEK
XT24701	4.75	23	X-Twist PEEK 4.75mm, w/1, 1.6mm suture tape (blu/wht)	PEEK
XT24702	4.75	23	X-Twist PEEK 4.75mm, w/2, 1.6mm suture tapes (blu, blu/wht)	PEEK
XT24703	4.75	23	X-Twist PEEK 4.75mm, w/2, 1.6mm suture tapes (blk, blk/wht)	PEEK
XT25500	5.5	23	X-Twist PEEK 5.5mm, w/1, #2 suture (blu/wht)	PEEK
XT25501	5.5	23	X-Twist PEEK 5.5mm, w/1, 1.6mm suture tape (blu/wht)	PEEK
XT25502	5.5	23	X-Twist PEEK 5.5mm, w/2, 1.6mm suture tapes (blu, blu/wht)	PEEK
XT25503	5.5	23	X-Twist PEEK 5.5mm, w/2, 1.6mm suture tapes (blk, blk/wht)	PEEK
XT26200	6.25	23	X-Twist PEEK 6.25mm, w/1, #2 suture (blu/wht)	PEEK

X-Twist Instrumentation				
Part #	Description	Sterile/ Non-sterile	Single-use/ Reusable	
XT04701	X-Twist 4.75-5.5mm awl	Non-sterile	Reusable	
XT04700	X-Twist 4.75mm tap	Non-sterile	Reusable	
XT05500	X-Twist 5.5mm tap	Non-sterile	Reusable	
XT00001	X-Twist sterilization tray	Non-sterile	Reusable	

Suture Tape			
Part #	Size (mm)	Description	QTY/ Box
20042	2	Parcus Braid® suture tape (wht/blu)	6
20042S	2	Parcus Braid suture tape (wht/blu)	1
20032S	1.6	Parcus Braid suture tape (wht/blu)	1
20034S	1.6	Parcus Braid suture tape (wht/blk)	1
20174S	1.6	Parcus Braid infinity loop (wht/blu) w/ straight needle	1



## Anika Therapeutics, Inc.

6423 Parkland Dr., Sarasota, FL  
 1-877-746-2972 • www.anika.com  
 ParcusCS@anika.com

©2022 Anika Therapeutics, Inc. | AML-900-344 Rev. 01 | 06/2022  
 Anika, Parcus, Parcus Braid, X-Spline and X-Twist are trademarks  
 and/or registered trademarks of Anika Therapeutics, Inc. and  
 its affiliates in certain jurisdictions.

